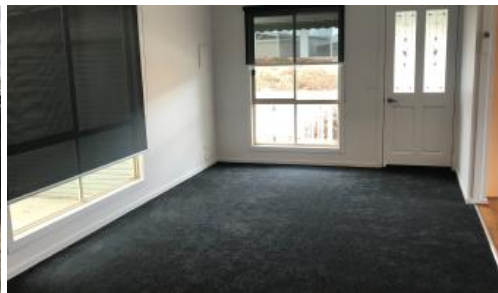




25 249 High Street, Hastings, Victoria



PRICE REDUCED! Site 025

This spacious two-bedroom unit is perfect for those seeking to downsize in a private and secure environment. It boasts numerous attractive features, including a generously sized kitchen with ample cupboard space and a separate large dining room. Both bedrooms come with built-in robes, while the main bedroom benefits from a semi-ensuite. The unit also includes a large lounge that connects to the bedrooms via an adjoining hallway, which offers additional cupboard space for a linen press and broom closet. At the rear you'll find a separate laundry area and private separate toilet. With new carpet throughout, an inspection is sure to impress. Additionally, the property features a remote-controlled lock-up garage, and a garden shed for extra storage.

Peninsula Parklands is a vibrant community designed for individuals aged 50 and over, nestled in the picturesque Westernport Bay. This unique neighbourhood fosters a sense of belonging among like-minded residents who seek a safe and secure lifestyle. Residents can participate in a variety of weekly and monthly group activities or simply relax in one of the nearby

 2  1  1

Price \$295,000
Property ID 105293

Sales Representative Details

Peninsula Parklands - Angela Cutting
0403632319
sales@peninsulaparklandsvillage.com.au

parks, coffee shops, or restaurants. With secure gate access and a community centre offering numerous activities and social events, everything you need is conveniently located nearby, including local shops, supermarkets, cafes, medical facilities, public transport, scenic walks, parks, and fishing spots.

Dont miss this opportunity call now to schedule an inspection!
(Reference No: HAMP-00358-751)

The above information provided has been furnished to us by the vendor/s. We have not verified whether or not that information is accurate and do not have any belief in one way or the other in its accuracy. We do not accept any responsibility to any person for its accuracy and do no more than pass it on. All interested parties should make and rely upon their own enquiries in order to determine whether or not this information is in fact accurate.

Powered By:



RELOCATABLE LIVING
— .COM.AU