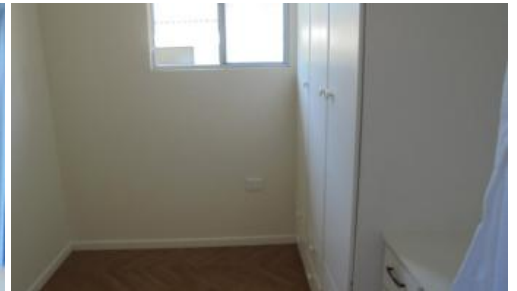




20/210 Pacific Highway, Coffs Harbour, New South Wales



Lime Tree Village - Site 20

Fresh to the market and priced to sell, this spacious two-bedroom home won't stay available for long. Set within the heart of the sought-after Lime Tree Village, the home offers a fantastic lifestyle for over-50s looking to downsize without compromise.

Step inside from the charming front verandah?perfect for enjoying a cuppa with a touch of privacy, thanks to the outdoor blind. The kitchen offers generous storage and flows into a large dining space and air-conditioned living area. The two bedrooms are well-sized, with the main featuring its own air conditioner for extra comfort during summer nights. A versatile study adds flexibility for hobbies or guests.

With a combined bathroom and low-maintenance layout, you'll enjoy comfort and ease. The village is pet-friendly and features a swimming pool, community hall, and easy public transport access?with a bus stop right outside.

 2  2  1

Price	\$230,000
Property ID	104964

Sales Representative Details

Margaret Blair
02 6652 1215
sales@limetreevillage.com.au

The above information provided has been furnished to us by the vendor/s. We have not verified whether or not that information is accurate and do not have any belief in one way or the other in its accuracy. We do not accept any responsibility to any person for its accuracy and do no more than pass it on. All interested parties should make and rely upon their own enquiries in order to determine whether or not this information is in fact accurate.

Powered By:

