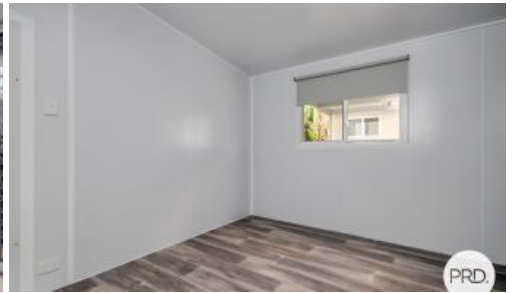


Sold



Laurieton



In Town and Brand New

What a perfect opportunity to secure a brand new cottage, right in the heart of town with the best in village living. Located in the desirable Laurieton Gardens permanent village, with the security of a 99 year lease, this cosy manufactured home ticks all the boxes for a laid back lifestyle right in the heart of it all. Enquire today and don't be late!

- * Quality brand new home boasting a spacious open plan design
- * Modern kitchen allows for efficiency and cleanliness
- * Large carport with extra turning space for ease of access
- * Modern bathroom with direct ensuite access from bedroom
- * Just 250m to the peaceful Riverwalk footpath along the glistening Camden Haven River
- * Only 600m to the Laurieton CBD and Coles Supermarket complex for all the essentials
- * Village includes swimming pool and playground, perfect for when the grandkids come to stay
- * Site fees are just \$165 per week and some residents may be eligible for rent assistance
- * Pet friendly with animals assessed upon application

 1  1  1

Price

SOLD

Property ID

103752

Sales Representative Details

Riley Papas

0415 172 249

rpapas@prdnationwide.com.au

We have obtained all information from sources we believe to be reliable; however, we cannot guarantee it's accuracy. Prospective purchasers are advised to carry out their own investigations.

The above information provided has been furnished to us by the vendor/s. We have not verified whether or not that information is accurate and do not have any belief in one way or the other in its accuracy. We do not accept any responsibility to any person for its accuracy and do no more than pass it on. All interested parties should make and rely upon their own enquiries in order to determine whether or not this information is in fact accurate.

Powered By:



RELOCATABLE LIVING
— .COM.AU