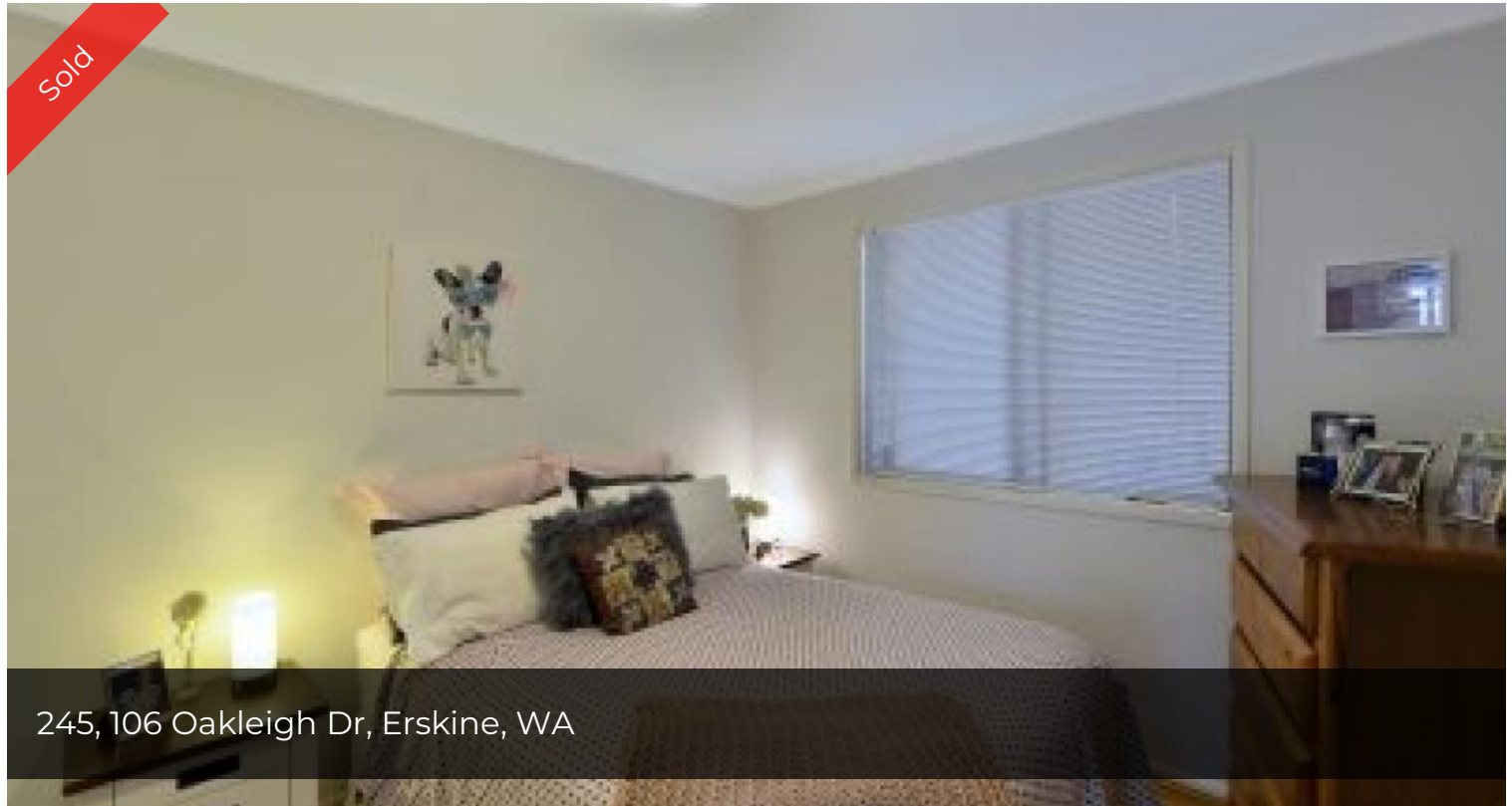


Sold



245, 106 Oakleigh Dr, Erskine, WA



Mallee - House 245

Spacious, light & bright Beautifully presented and fully established, this home will suit the fussiest of buyers. And with two bedrooms plus a study, your new home offers plenty of space for everyone. The living areas are open plan with timber look floors throughout and high ceilings which emphasize the spacious feel of the home. A split system air conditioner in this area ensures comfort year round. The kitchen is finished in high gloss white and features a wide fridge recess, double sink and overhead cupboards for extra storage. Both bedrooms are a great size with built in storage and the Master has a ceiling fan and semi en suite bathroom. The bathroom is finished in modern, neutral colours and has a heater/fan/light fitting and a heated towel rail. Your laundry features built in cupboards, a second WC and sliding door access out. The study also has a split system air conditioner and direct access to the enclosed alfresco area. With lovely, low care gardens (complete with fruit trees and a garden shed) all you need do is sit back and enjoy your lovely new home. Don't miss this opportunity!

 2  1  1

Price SOLD
Property ID 102337

Lifestyle Community Details

Bridgewater Lifestyle Village

Sales Representative Details

Bridgewater Lifestyle Village
08 95504882
tracyc@nlv.com.au

The above information provided has been furnished to us by the vendor/s. We have not verified whether or not that information is accurate and do not have any belief in one way or the other in its accuracy. We do not accept any responsibility to any person for its accuracy and do no more than pass it on. All interested parties should make and rely upon their own enquiries in order to determine whether or not this information is in fact accurate.

Powered By:

