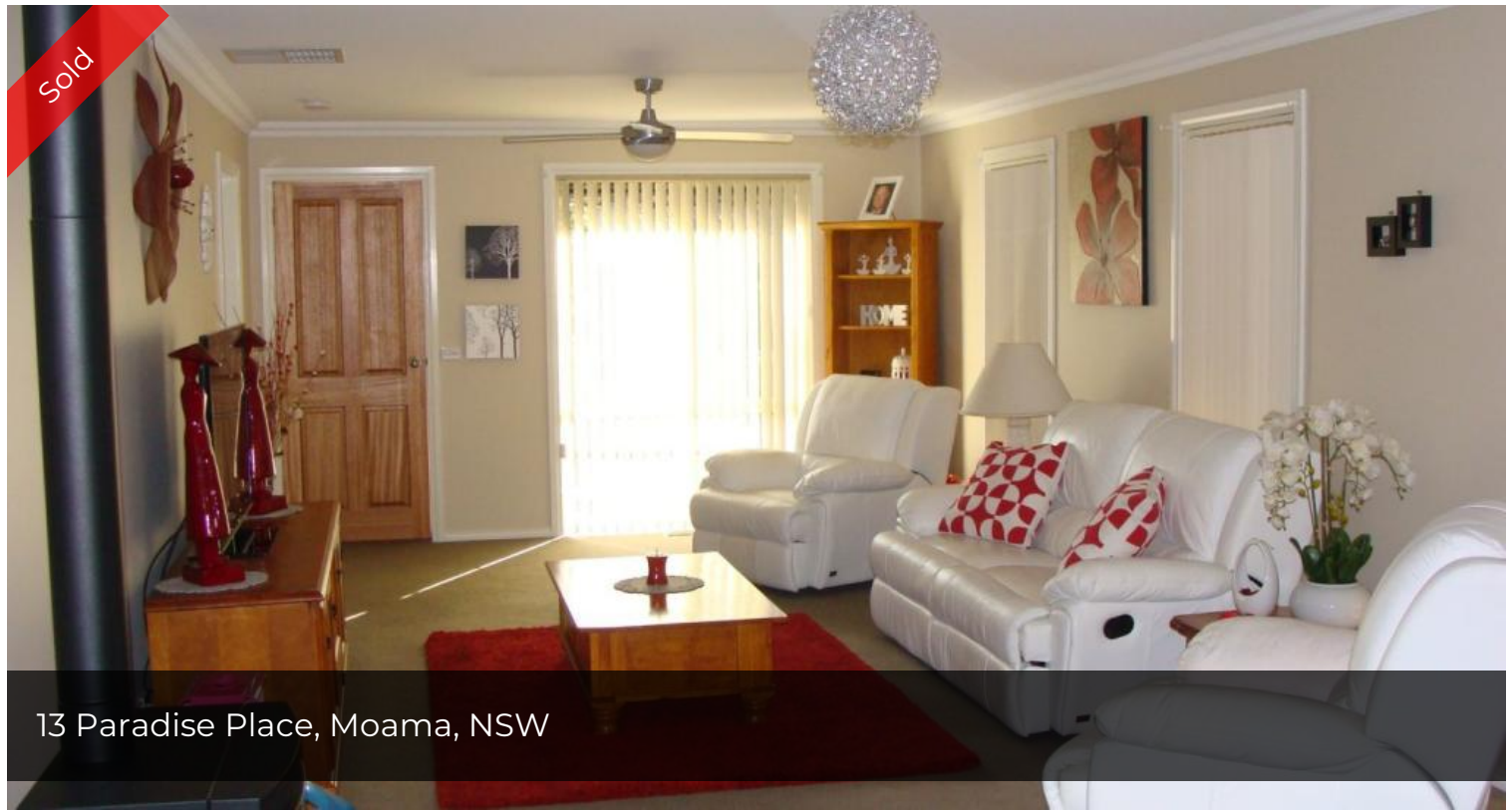


Sold



13 Paradise Place, Moama, NSW



MORE FOR YOUR MONEY

This Home is situated in Gateway Lifestyle Village Moama which is a relocatable home park for over 50 years of age. Around you are permanent owner occupiers, all the homes offer town services which include town filtered water, natural gas, town sewage, sealed roads and fully fenced allotments. The village also offers a community heated swimming pool, community meeting centre, tennis court, and undercover barbeque area. An alternative cost effective life style for retirees. This immaculate presented three bedroom home is based on the Rodney design and is in an ideal position just across from the community hall. The standard inclusions are natural gas cooking appliances plus dishwasher, open plan living area, three large bedrooms with built in robes, two toilets, family size bathroom and a ensuite off the main bedroom, ducted natural gas heating, ducted evaporative air conditioning. Other extras include wood fire look natural gas heater, remote control roller door, undercover 6m x 3m outdoor entertainment area, 2.5m x 3m colour bond garden shed, quality window furnishings and a low maintenance garden.

 3  2  1

Price	SOLD for \$230,000
Property ID	100066

Sales Representative Details

Wayne Norwood
0418144328
wayne@clk.com.au

The above information provided has been furnished to us by the vendor/s. We have not verified whether or not that information is accurate and do not have any belief in one way or the other in its accuracy. We do not accept any responsibility to any person for its accuracy and do no more than pass it on. All interested parties should make and rely upon their own enquiries in order to determine whether or not this information is in fact accurate.

Powered By:

